

- Covers and seals joints in accessible roofs
- Trouble-free installation
- Cost-effective option
- Absolute watertightness

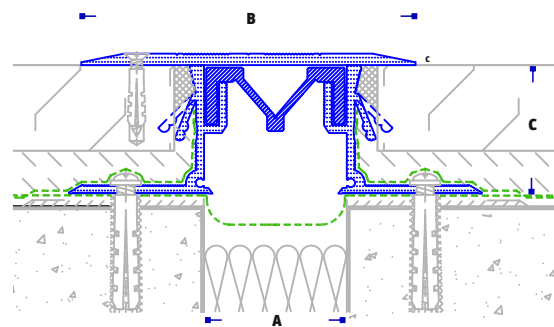


↔ Thermal & seismic movement

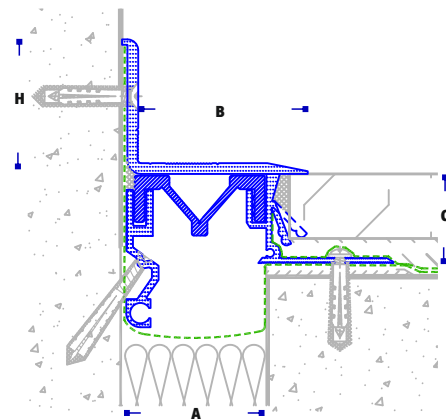
Materials:

- Bases: Extruded aluminium ASTM B 221 alloy 6063- T5 in standard mill-finish.
- Cover plates: Extruded aluminium ASTM B 221 alloy 6063- T5 clear anodized
- Elastomeric seal 2SIP-LM made of special composition UV-PVC or TPE Santoprene in standard black, grey & beige (other RAL colour available upon request).

4R-WTS



4R-WTS/C



TYPE	JOINT WIDTH 'A'	TOTAL VISIBLE WIDTH 'B'	FRAME HEIGHT 'C'	ANGLE FRAME HEIGHT 'H'	TOTAL MOVEMENT*
4R-WTS 50	50	117	33/45	-	76 [-28+48]
4R-WTS 75	75	167	33/45	-	114 [-44+70]
4R-WTS 100	100	167/219	33/45	-	162 [-66+96]
4R-WTS 150	150	219	33/45	-	236 [-96+140]
4R-WTS 200	200	250	33/45	-	326 [-137+189]
4R-WTS/C 50	50	64	33/45	50	78 [-30+48]
4R-WTS/C 75	75	102	33/45	60	110 [-40+70]
4R-WTS/C 100	100	102/152	33/45	60	156 [-66+90]
4R-WTS/C 150	150	210	33/45	60	231 [-96+135]
4R-WTS/C 200	200	210+117	33/45	60	324 [-135+189]

*Movements depend on the cover plate width

Dimensions in mm

Installation guidelines:

- Separate installation instructions are available for each product series
- Installation instructions must be carefully reviewed prior to starting work.
- Additional, tailor-made instructions can be provided upon request.
- Rigid fixing substrate is of prime necessity for all applications.
- Where separate water-barrier or fire-barrier products are required, install these first following respective installation instructions.

Storage & handling:

- Do not expose parts should not be exposed to direct sunlight or weather conditions. Recommended storage temperature: 10°C - 28°C.
- Place parts off the ground and keep them protected from construction activities.
- Handle parts with proper care so as not to injure the finished (exposed) surfaces.
- Ensure that after installation the expansion joint covers are protected from damage due other construction activities in nearby areas.
- Refer to our separate sheet 'Care & Maintenance Instructions' for cleaning guidelines.
- > For storage and handling instructions of any other related materials (mastic sealants, chemical anchors etc) refer to related manufacturer datasheet.

Packaging:

- Aluminium covers & profiles in standard 3m or 4m long pieces
- 2SIP-LM insert in 20m rolls
- Custom lengths available upon request.

Health and Safety:

- These products are for industrial use only by trained operatives.
- They are pre-manufactured solid items that do not contain or release any chemicals under normal conditions of use.

Product guarantee:

ACP HELLAS supplies products that comply with the properties included in the current catalogues & datasheets.

In the unlikely event that products supplied are proved not to comply with these properties, then we will replace the non-compliant product or refund the purchase price. ACP HELLAS does not guarantee the installation of the products as it does not have control over the installation or end use of the products.

Any suspected defects must be reported to ACP-HELLAS in writing within twenty (20) working days of being detected. ACP-HELLAS makes no warranty as to merchantability or fitness for a particular purpose and this warranty is in lieu of all other warranties express or implied.

ACP-HELLAS shall not be liable for damages of any sort including remote or consequential damages, down time, or delay.

ACP HELLAS LTD

Mylopotamou 24 Str. Athens 115 26, GREECE

tel: +30 210 6928309, +30 210 6917665

fax: +30 210 6928310



info@acp-hellas.com

www.acp-hellas.com